



**ALASKA DIVISION OF HOMELAND SECURITY &
EMERGENCY MANAGEMENT**

SITUATION REPORT 23-282 • October 09, 2023



Toll-Free 1.800.478.2337

Anchorage Area 907.428.7000

SEOC 907.428.7100

<p><u>SEOC Preparedness Level</u></p> <p>Level 1 - Routine Operations</p>	<p>http://ready.alaska.gov</p>	<p><u>National Terrorism Advisory System:</u></p> <p>Read the NTAS Bulletin here</p>
<p><u>Maritime Security (MARSEC)</u> Level:1- Minimum Appropriate Security Measures</p>	<p>WHO Novel Coronavirus Pandemic (COVID-19):</p> <p>2019 Novel Coronavirus</p>	<p><u>Alaska Military Installation Force Protection Level:</u> FPCON Bravo</p>

(Significant changes from previous situation reports are red.)

Significant Issues:

None.

State of Alaska Department of Health (DOH)

The DOH stands ready to assist with all aspects of public health and in the event of a public health emergency, supported by the SEOC and other state departments as required. For current information, see:

<https://health.alaska.gov/dph/Pages/default.aspx>

<https://health.alaska.gov/dph/Emergency/Pages/prepared/default.aspx>

NTAS Bulletin

The U.S. Department of Homeland Security has issued an updated National Terrorism Advisory Bulletin. The updated bulletin can be viewed at the below link.

To read current or expired advisories, click the link below:

<https://www.dhs.gov/national-terrorism-advisory-system>

Travel Alerts and Conditions

For current driving conditions dial 511 or link to <https://511.alaska.gov/>

Barry Arm Landslide / Tsunami Risk

For the latest information on the Barry Arm Landslide and Tsunami risk, click here:

<https://dggs.alaska.gov/hazards/barry-arm-landslide.html>

Recent Earthquakes

USGS Earthquake Information: <http://earthquake.usgs.gov/>

National Tsunami Warning Center: <http://tsunami.gov/>

Alaska Volcanoes

Great Sitkin Alert Level: **Watch** and Aviation Color Code: **Orange**

Shishaldin Alert Level: **Watch** and Aviation Color Code: **Orange**

Trident Alert Level: **Advisory** and Aviation Color Code: **Yellow**

For Alaska Volcano updates, go to: <https://www.avo.alaska.edu/>

Air Quality Index (AQI) Advisories

Air Quality Advisory in effect for Eastern Aleutians, Shelikof Strait, and Kodiak Island - Katmai and the Valley of Ten Thousand Smokes will pick up loose volcanic ash erupted during the 1912 Novarupta-Katmai eruption and will carry it to the southeast through Thursday morning.

For the most up to date Air Quality Index Advisories:

<http://dec.alaska.gov/Applications/Air/airtoolsweb/Home/Index>

Spills of Oil and Hazardous Substances

The ADEC Spill Prevention and Response page is located at:

[http://dec.alaska.gov/spar/ppr/spill information/response/](http://dec.alaska.gov/spar/ppr/spill%20information/response/)

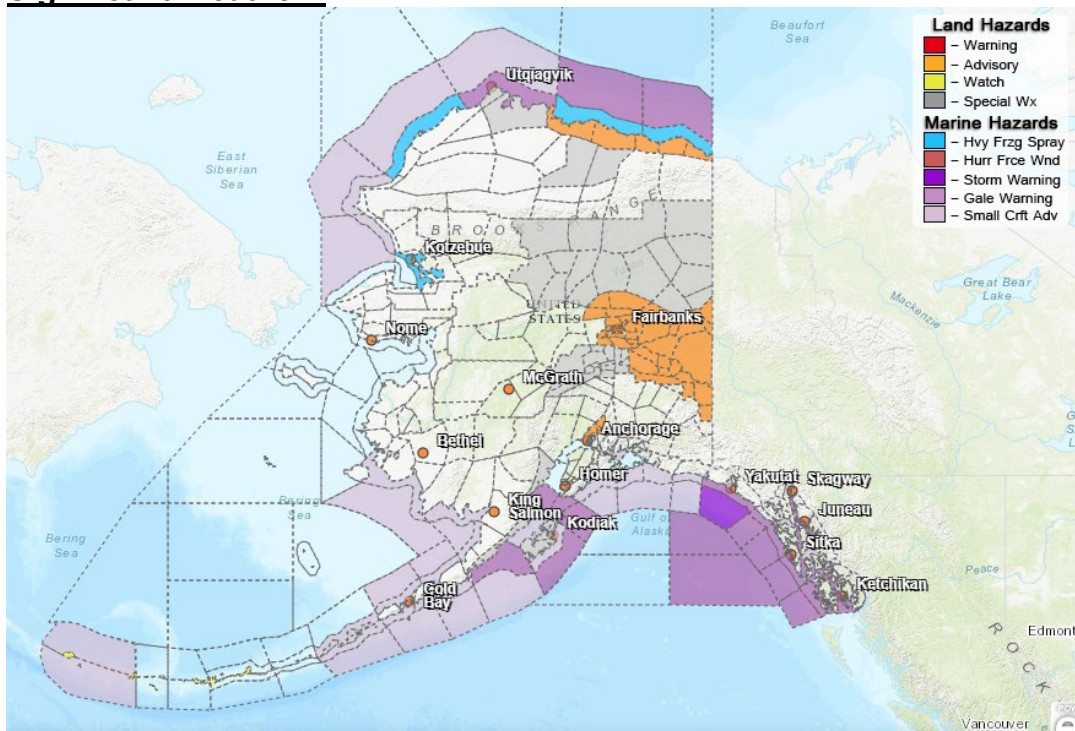
Alaska Cyber Security Information

State Employees may sign up for cyber security notifications and alerts at

<https://oit.alaska.gov/security>

CISA-Cybersecurity Services and Tools: www.cisa.gov/free-cybersecurity-services-and-tools

Significant Weather:



Special Weather Statements:

- **Kodiak Island** – Resuspended ash fall from Katmai-Novarupta expected over Kodiak Island early Monday

through late Tuesday morning.

- **Northern Arctic Coast** – Snow and blowing snow expected through Tuesday.
- **Central Arctic Plains** – Snow and blowing snow expected tonight and Tuesday night.
- **Northern Denali Borough: Southern Denali Borough** - Snow and blowing snow expected through Tuesday.
- **Central and Eastern Brooks Range, Upper Koyukuk Valley, Yukon Flats, and Dalton Hwy** – Snow and blowing snow expected through Tuesday night.
- **Eastern Aleutians** – High winds possible Thursday morning through Thursday afternoon.

Winter Weather Advisories

- **White Mountains and High Terrain South of the Yukon River** in effect through midnight tonight for snow and blowing snow with additional accumulation of 2-4 inches.
- **Fortymile Country; Upper Tanana Valley; Eastern Alaska Range North of Trims Camp; Eastern Alaska Range South of Trims Camp** in effect through 6:00AM Tuesday for snow and blowing snow with additional accumulation of 3-5 inches.
- **Delta Junction** in effect from 1:00PM this afternoon through 7:00AM Tuesday for snow with accumulation of 3-4 inches expected.
- **Central Beaufort Sea Coast: Eastern Beaufort Sea Coast** in effect from 10:00PM this evening through 1:00PM Tuesday, blowing snow expected with accumulation of 3-5 inches and winds gusting up to 40 mph.

High Wind Watch

- **Central and Western Aleutians** – High wind watch in effect Thursday morning through Thursday afternoon for south winds 50-65 mph, gusting as high as 80 mph.

For more information and the most current weather, go to: <http://www.weather.gov/arh>.

The Next Situation Report will be **October 10, 2023**. A significant change in the situation or the threat level will prompt an interim report. This report is posted on the internet at <https://ready.alaska.gov/sitrep>. To register for email distribution, go to <http://list.state.ak.us/mailman/listinfo/dhsem.situation.report>. Direct questions regarding this report to the SEOC at 907-428-7100 or seoc@alaska.gov